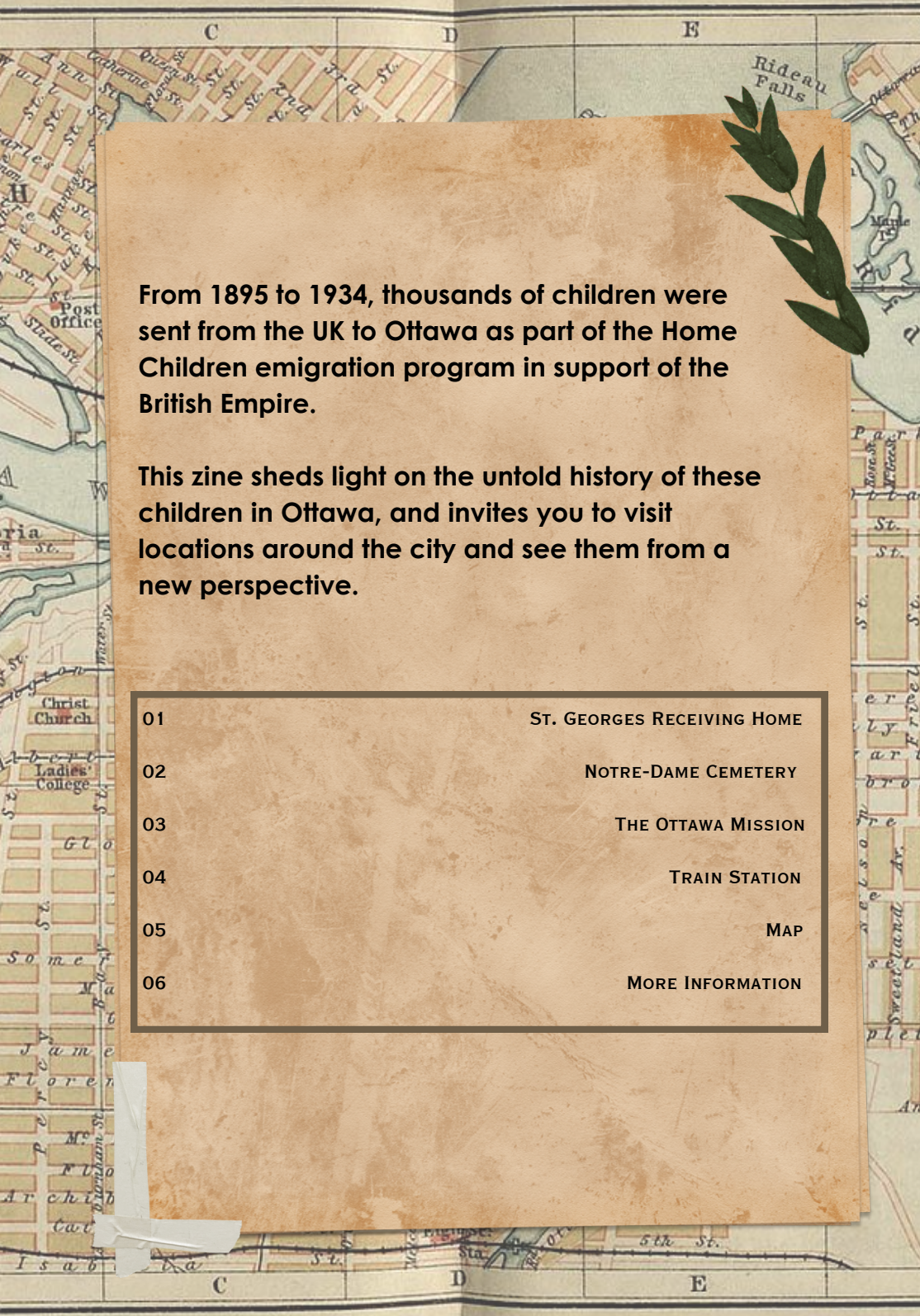


UNTOLD STORIES

THE HOME CHILDREN OF OTTAWA



HISTORICAL ZINE WALKING TOUR



From 1895 to 1934, thousands of children were sent from the UK to Ottawa as part of the Home Children emigration program in support of the British Empire.

This zine sheds light on the untold history of these children in Ottawa, and invites you to visit locations around the city and see them from a new perspective.

- | | |
|----|----------------------------|
| 01 | ST. GEORGES RECEIVING HOME |
| 02 | NOTRE-DAME CEMETERY |
| 03 | THE OTTAWA MISSION |
| 04 | TRAIN STATION |
| 05 | MAP |
| 06 | MORE INFORMATION |

NEW ORPINGTON LODGE

(ST. GEORGE'S HOME)

New Orpington Lodge was opened in **1895** on Wellington St. in Hintonburg as a receiving and distributing home for Catholic boys from the U.K.

After a negative report in **1904** by a government inspector, the home was renovated in **1907** and renamed **St. George's Home**. Officially closed in around **1934**, it remains under the ownership of the Catholic Church to this day as **Queen of the Most Holy Rosary Parish Rectory**.



Thousands of children passed through St. George's doors, some to brighter futures. Sadly, many children succumbed to the nature of their circumstances and lost their lives.

ST. GEORGE'S MEMORIAL (NOTRE-DAME CEMETERY)

There are two headstones commemorating 23 Home Children who died while in the care of St. George's Home between the ages of **14 to 26**, spanning more than 10 years.



David Lorente, founder of Home Children Canada, worked incredibly hard to keep the stories and memories of as many Home Children as possible alive, thus prompting the creation of this particular headstone.



THE OTTAWA MISSION

ORIGINAL LOCATION



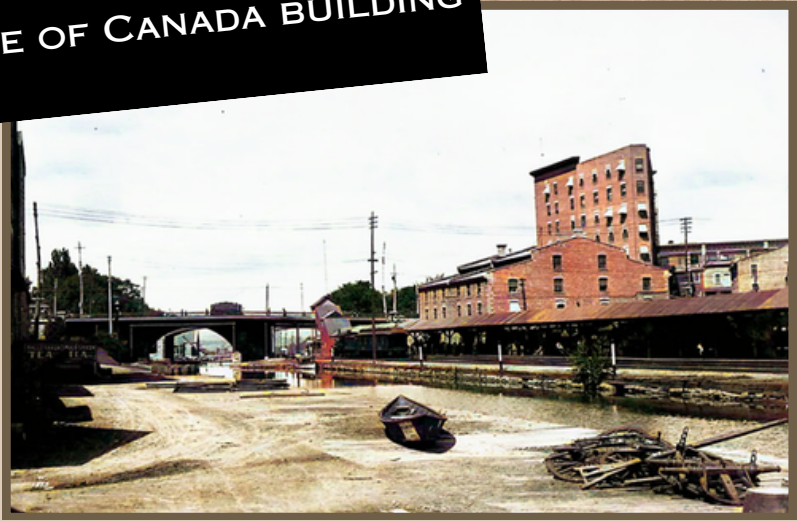
In **1907**, The Ottawa Mission officially opened at **73-75 George St.** with room for 12 beds.



The Ottawa Mission was often a temporary refuge for Home Children who aged out of homes with nowhere to go, or for children seeking safety from pitiful living conditions.

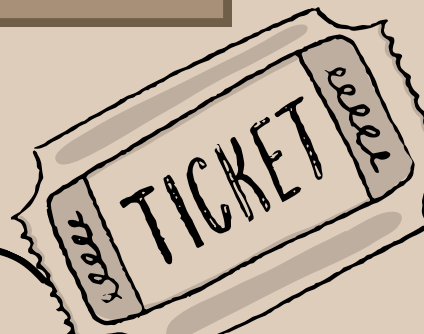
TRAIN STATION

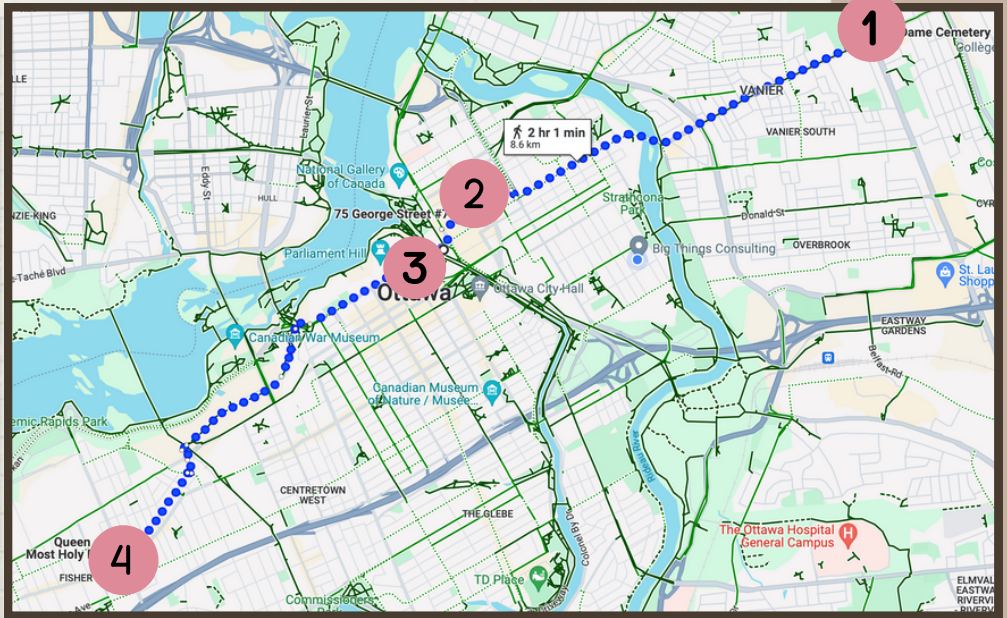
THE SENATE OF CANADA BUILDING



For decades, Home Children traveled more than 5,000 kilometers from the United Kingdom to reach St. George's Home in Ottawa, Ontario and other homes just like it.

Established in 1912, the **Grand Trunk Station** and Railway service ran through Ontario and Quebec. The station was converted into the temporary **Senate Building of Ottawa** in 2013.





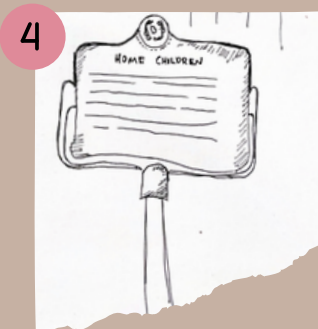
Notre-Dame Cemetery
455 Montréal Rd



Ottawa Mission
75 George St



**Senate of Canada Building
(formerly Grand Trunk Train Station)**
2 Rideau St



**Queen of the Most Holy Rosary Parish
(formerly St. George's Home)**
1153 Wellington St

**For sources and more info,
please visit our website!**



**Created by Leyla A.,
Aliya H. & Samar M.**

© 2024